

# Root Angulation



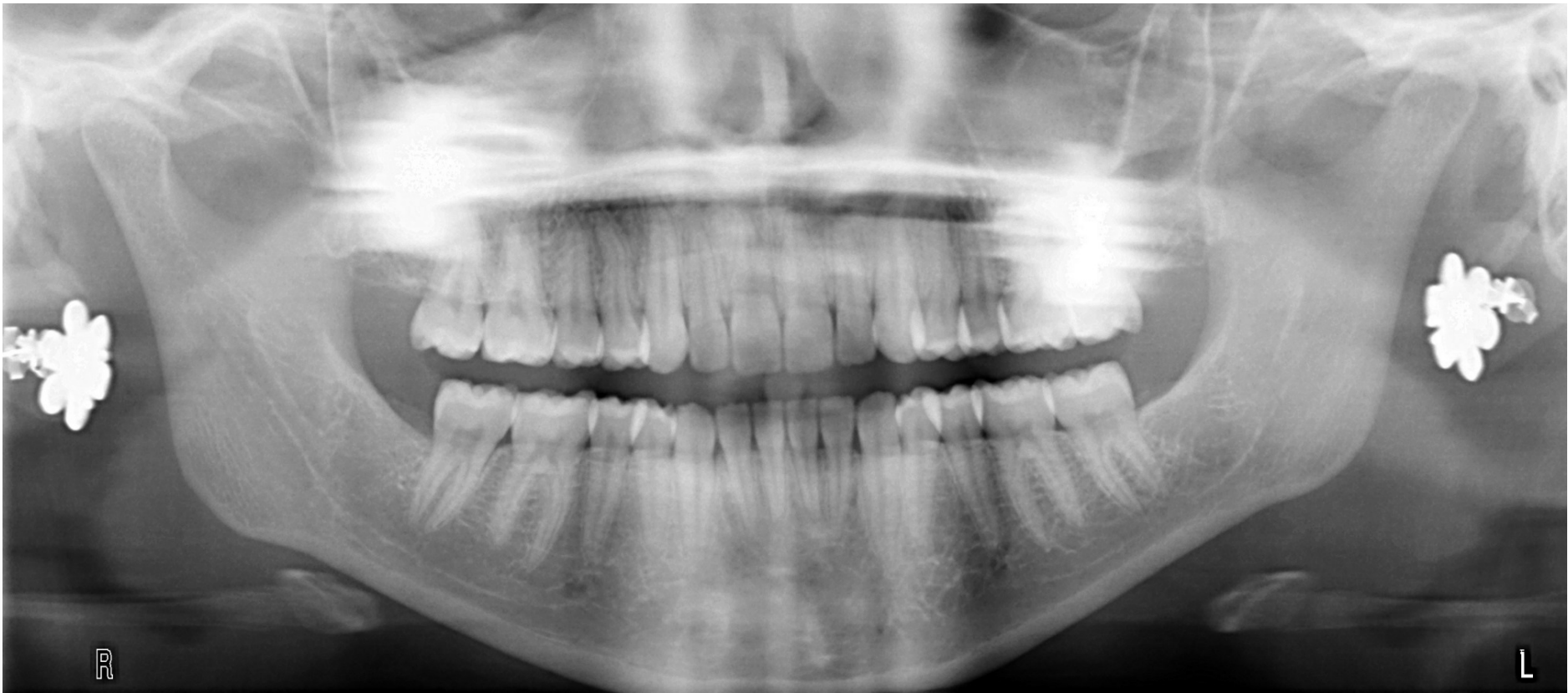
*The highest commitment to excellence.*



# Example of Good Quality Radiograph



**Ahaa...not quite!**



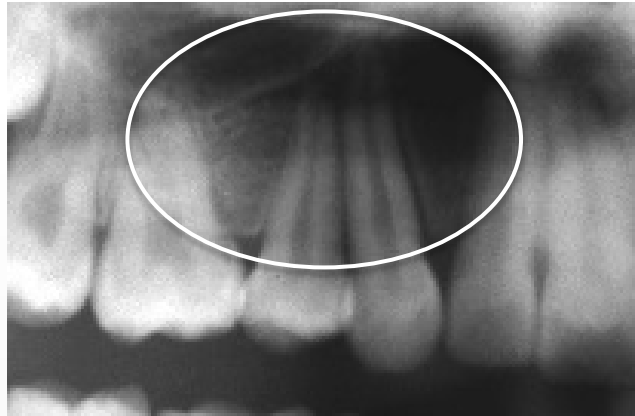
# Roots parallel to each other/long axis Perpendicular to occlusal plane





# Points Scored

**Roots not parallel = 1 pt scored**



**Roots touching = 2 pts scored**

**Note: exclude canines**





# Most Frequently Observed Errors:

## Maxilla:

laterals, canines and premolars

## Mandible:

first premolars

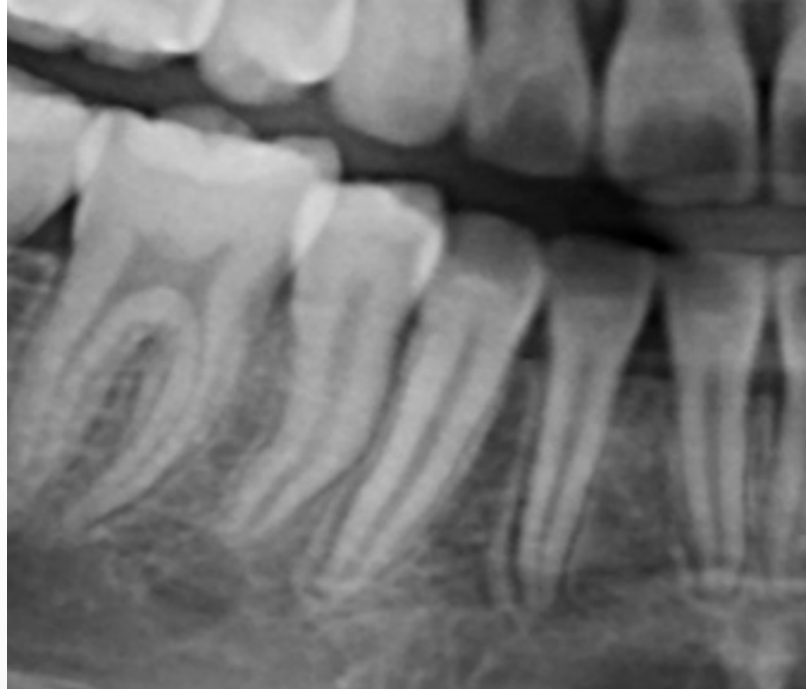
**-acknowledge that distortion frequently occurs with the panoramic radiograph-**

**Therefore, omit scoring the canine relationship w adjacent tooth root when using the panoramic radiograph.**

# Dilacerated Roots – Not Scored



# Dilacerated Roots





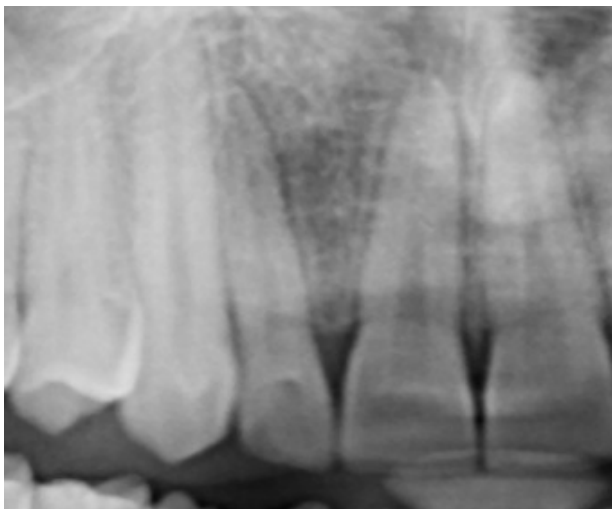


# Maxillary Right Lateral = 1 point scored





**Max right Lateral – 1 point**



**Mand left -between 5 & 6 – Mand left first molar scored ?**



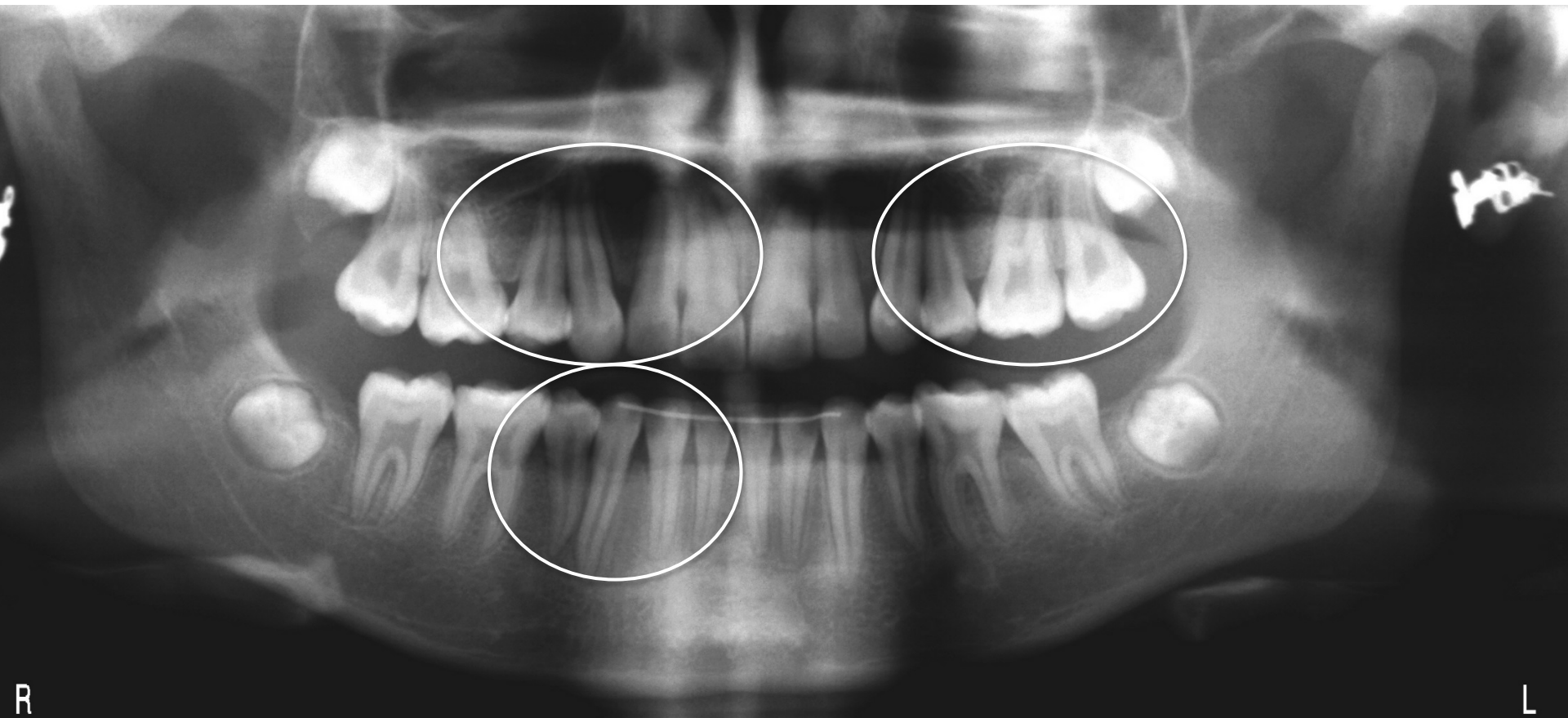


# Non-Parallel Roots

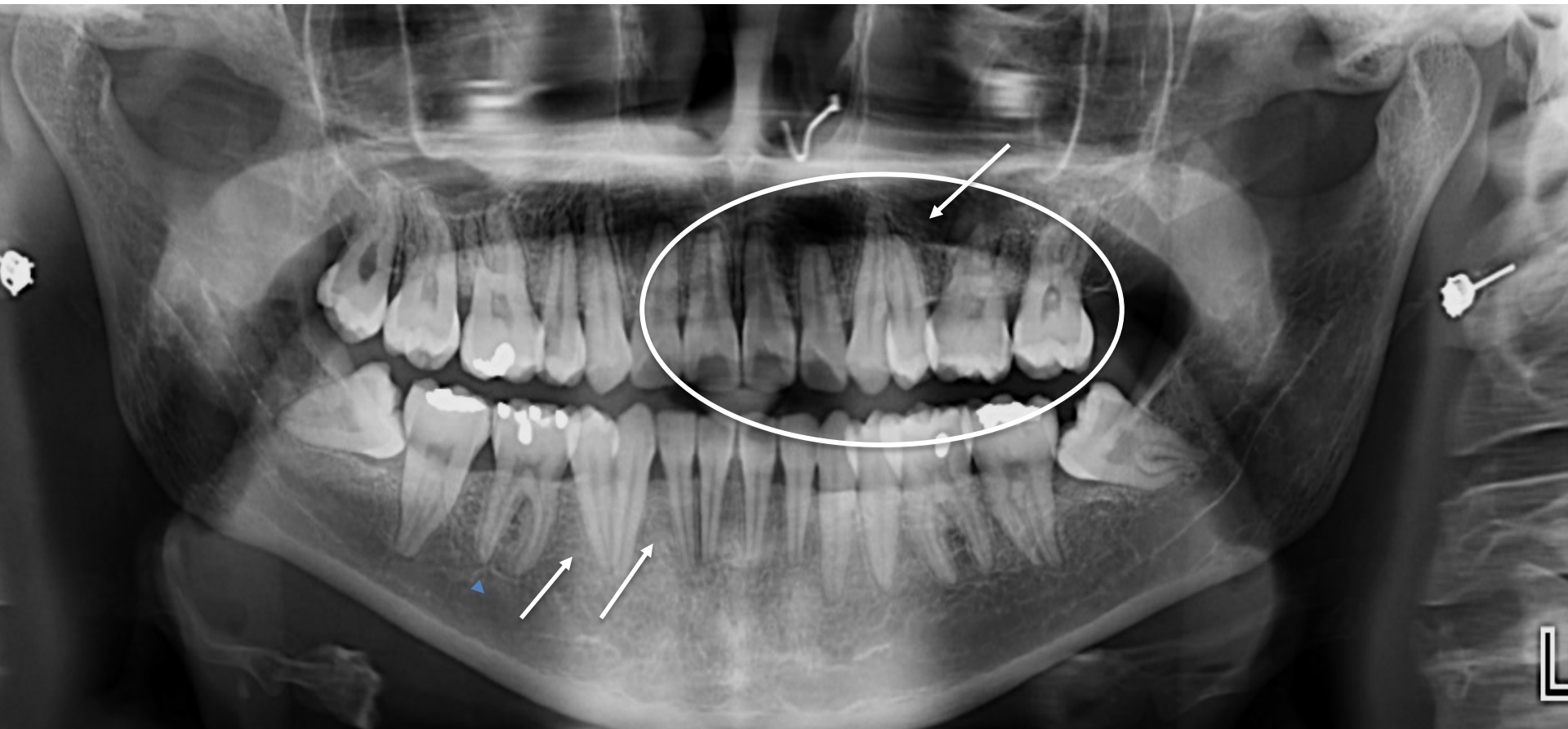
Max. arch - 2 x 1 = 2 pts scored

Mand. right = 1 point scored

total = 3 points



Roots touching(?) = 2 points (but against canines...distortion?)  
Non-Parallel roots = 3 points  
Total = 3 points



# Extra Credit

